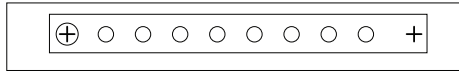


To achieve proper **Rocket Tail Effect**, insert fibers accordingly.

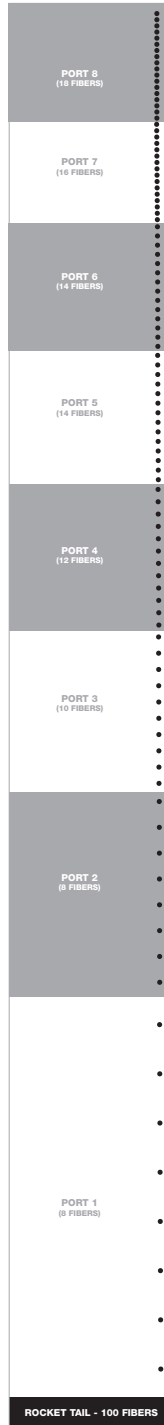
Take fibers from **PORT 1** on your module and insert them into **PORT 1 SECTION** of the template.
The number of holes in each PORT section on the template will correspond to the number of fibers from the module LED port.

Don't worry if you're not exact to the template,
as long as you match the correct numbered LED FIBER PORT to the corresponding PORT sections on the template
your effects will look great!

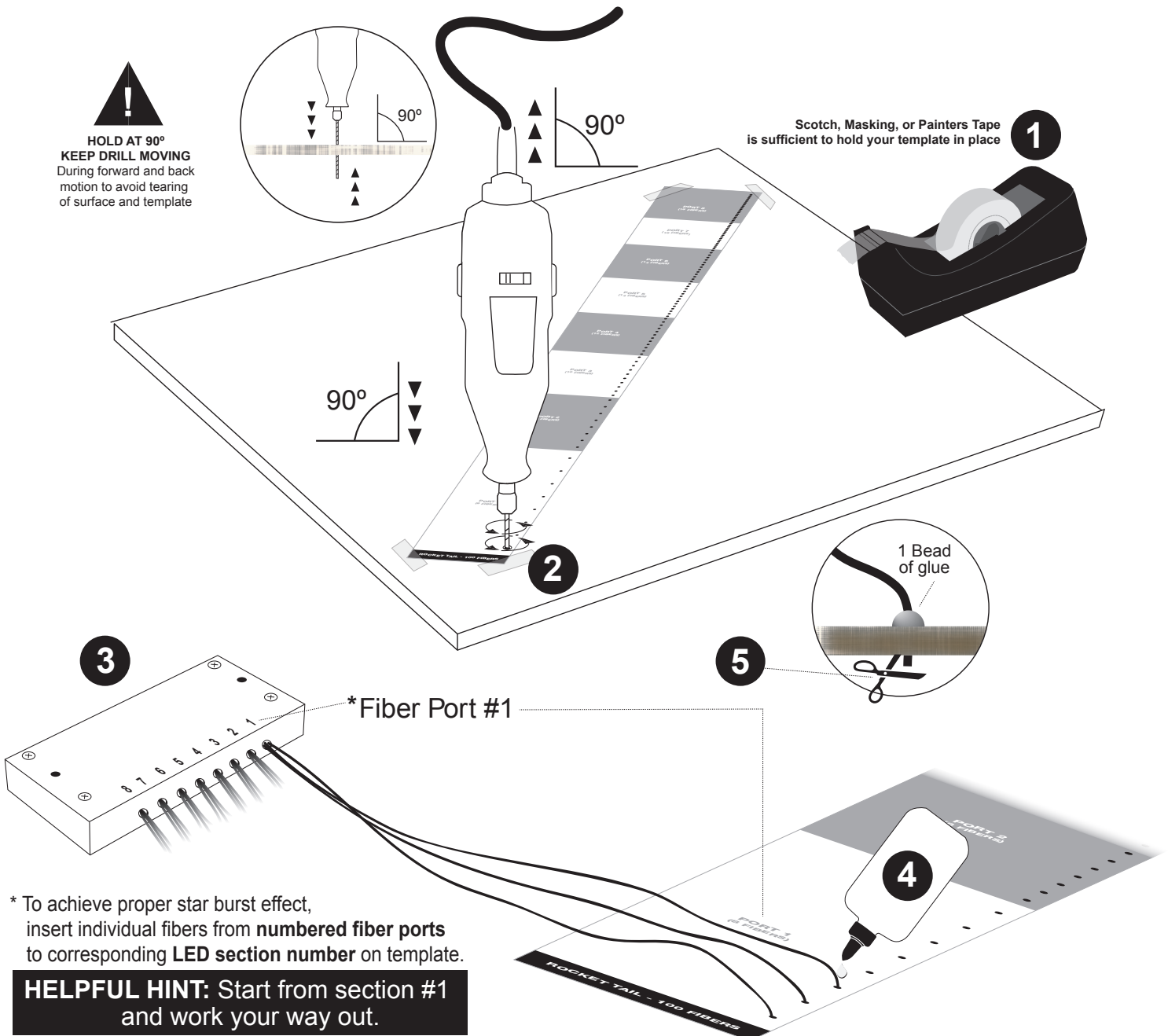
8 7 6 5 4 3 2 1



ROCKET TAIL STRAIGHT
100 TOTAL FIBER POINTS



- 1 Unroll Template and tape to your surface.
- 2 Use Dremel® (recommended) and bits provided to drill holes into designated dots on template. When all holes have been drilled, remove template.
- 3 Start inserting your fibers **STARTING WITH PORT 1 ON YOUR MODULE**, take fibers and insert into **PORT 1 SECTION** on the template. The number of holes in each port section on the template will correspond to the number of fibers from the modules LED port. Use template reference on the back of this sheet as a guide. Don't worry if you're not exact to the template. As long as you match the numbered fiber port to the corresponding numbered port sections on the template, your effects will look great!
- 4 Glue fibers into place and allow to set. (Use glue provided in kit. DO NOT USE Super Glue or stronger bonding agents as they may degrade fibers)
- 5 Trim fiber flush to surface with scissors.



Epic Sky Technology

A Division of Impact Lighting, Inc.

2101 West Central Blvd. Orlando, Florida 32805 USA • Phone: 1.800.507.5714 • Email: sales@epicskytech.com

www.epicskytech.com